

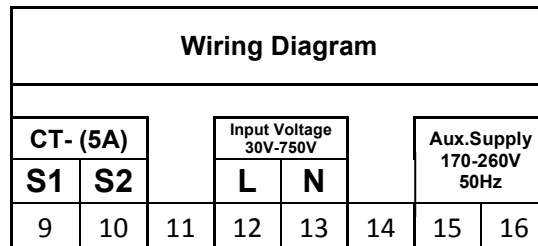
Techno Meters & Electronics

Single Phase VIF

Technical Specification:

Model	TMCB-022
Display Parameters & Range	<u>Parameters</u> <u>Range</u>
	Voltage 25V – 300V
	Current 10% - 120% of CTR
	Frequency 45Hz – 55Hz
Features	<ul style="list-style-type: none"> • True RMS Measurement • CT Ratio Programming (Range: 5/5 to 9000/5) • Auto scrolling & Manual mode selectable • Auto decimal shifting for current (from 0.01A to 1A) • Bright Seven segment LED display for better readability
Accuracy	Class 1.0
Display	Three Line Seven Segment display, Size 0.56"
CT Selection	Programmable through KeyPad
Connection	1-phase, 2 wire
Aux. Supply	170V – 270Vac, 50Hz
Dimension	96mm(H) x 96mm(W) x 75mm(D)
Weight	

Connection Diagram:



Operation Manual:

1. Press \sqrt{M} key to select *Manual Mode* or *Auto Mode*. *Auto* LED indicates *Auto Mode*.
2. In *Auto Mode*, Voltage, Current and Frequency is displayed sequentially for 20 sec.
3. In *Manual Mode*, repeatedly press \uparrow key till the required mode is displayed.
4. To check the value of CT ratio programmed in the meter, press Prog key. The meter will display its programmed value. The factory setting value for CTR is **0 1 0 0** (i.e. 100/5)
5. To change the CT ratio, continuously press Prog key for 10 seconds. The CT ratio value starts blinking. Use \uparrow and \downarrow key to increase or decrease the CT ratio. Press Prog key for 10 seconds to save the new CT ratio & exit to normal mode.